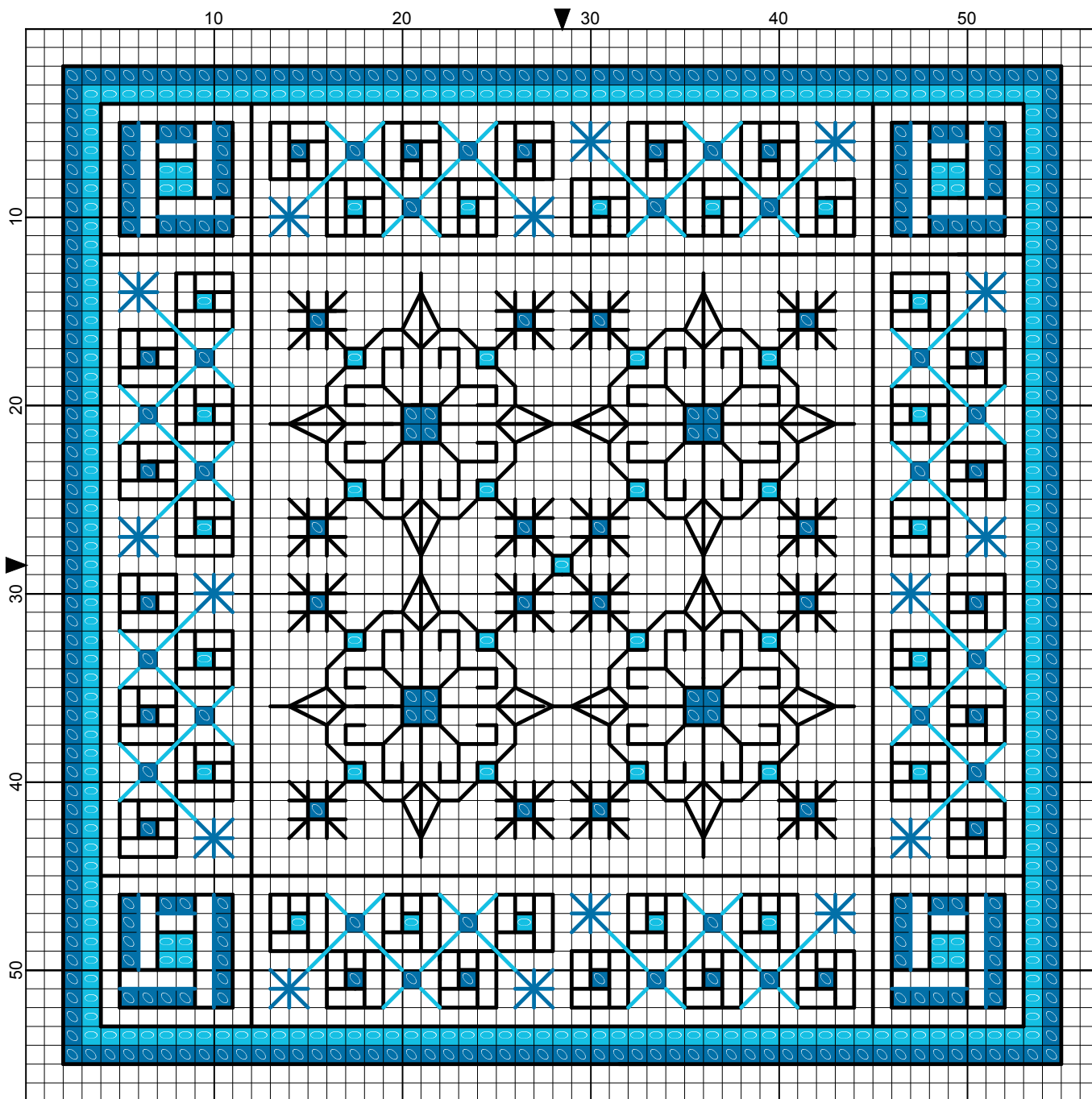


Patchwork



Elizabeth Almond




Patchwork

Author: Elizabeth Almond
Copyright: Elizabeth Almond
Grid Size: 57W x 57H
Design Area: 3.79" x 3.79" (53 x 53 stitches)

Legend:

 [2] DMC 995 electric blue - dk  [2] DMC 996 electric blue - md

Backstitch Lines:

 DMC-310 black  DMC-995 electric blue - dk  DMC-996 electric blue - md

Patchwork

This is a good introduction to using colour in blackwork. The design uses three shades but other colours can be substituted for the blues.

Materials:

14 count Aida 8 x 8 inches

Threads:

DMC cotton stranded

310 Black, one skein

995 Electric blue - dark, one skein

996 Electric blue - medium, one skein

Tapestry needle No.24

Stitches used:

Back stitch

Cross stitch

Method:

Start from the centre of the design working outwards. Use one strand for the back stitch and two strands for the cross stitch throughout.

The size of the pattern can be extended by joining four or more squares together.

I hope you enjoy stitching this pattern as much as I enjoyed designing it.