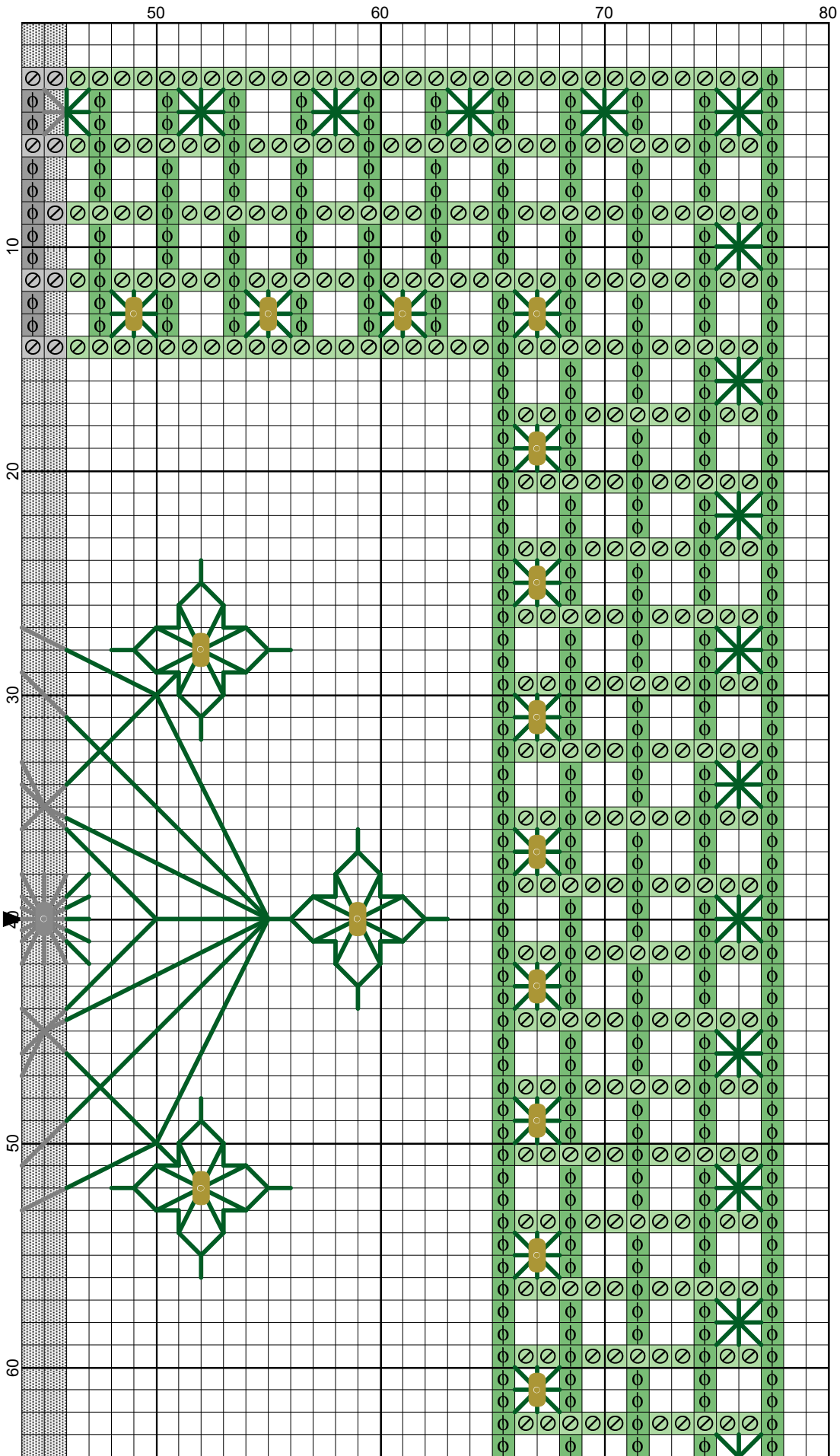


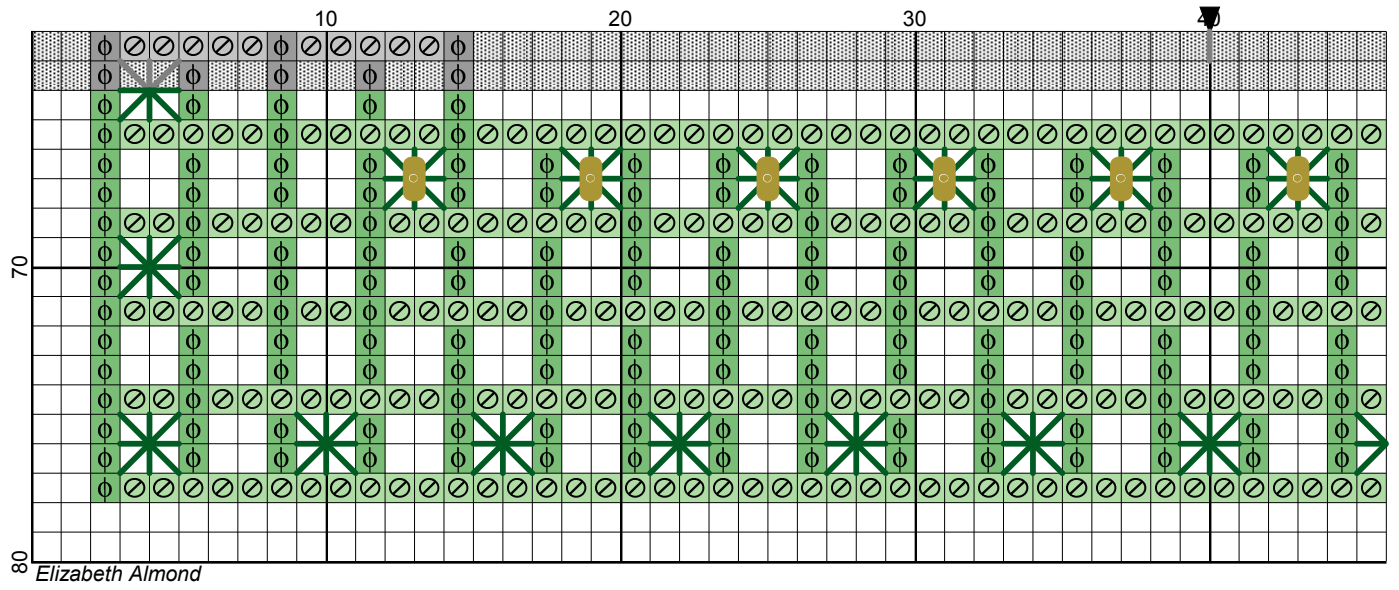
Line Time



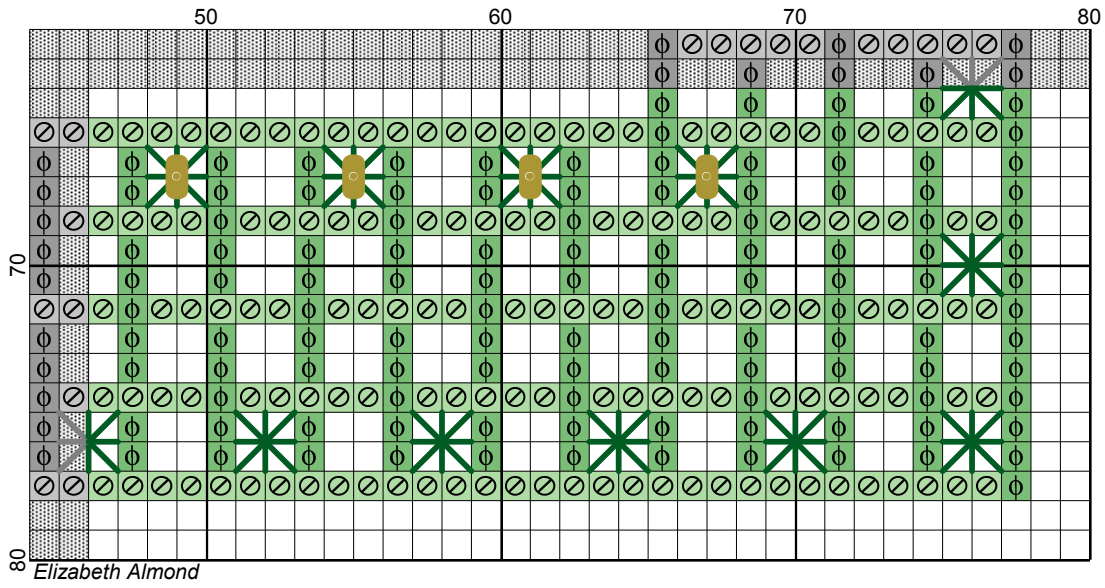
- Legend:
- DMC-320
 - DMC-368
- Backstitches:
- DMC-699
- Beads:
- MHG-2011

Elizabeth Almond

Line Time



Line Time





Elizabeth Almond

Line Time


Author: Elizabeth Almond
Copyright: Elizabeth Almond
Grid Size: 80W x 80H
Design Area: 5.29" x 5.29" (74 x 74 stitches)

Legend:

 [2] DMC-320 ANC-216 pistachio green - md

 [2] DMC-368 ANC-240 pistachio green - lt

Backstitch Lines:

 DMC-699 christmas green

Beads:

 MHG-2011 Mill Hill Glass Beads-Victorian Gold

Line Time

Line Time is a counting challenge. Look carefully at the lines on the graph. The diamonds in the middle are worked over TWO threads of fabric. The longer lines are worked over FOUR threads making the angle of the lines sharper.

Material:

28 count evenweave, 10 x 10 inches.

Border is optional

Threads:

DMC stranded cotton in three shades - dark, medium and light - one skein of each

Mill Hill Glass beads

2011 Victorian gold, one packet

Tapestry Needle No.24

Beading needle.

Stitches used:

Algerian eye, 16 arm worked in one strand over 4 threads

Back stitch - ONE strand throughout for lines

Cross stitch TWO strands throughout

Eyelet stitch border 8 arms. Use one strand and work from outside to centre with each stitch

Method:

Start from the centre of the design with the Algerian eyes using one strand. Stitch from the outside to the centre with each stitch. Work the diamonds round the eyes and then move onto the longer lines remembering to adjust the length of the stitches over 4 x 2 threads.. Add the flowers and the border . The eyelet stitches within the border are worked in one strand.

Add the beads after the embroidery has been completed.

I hope you enjoy working this design. If you have any queries please contact:

lizalmond@blackworkjourney.co.uk